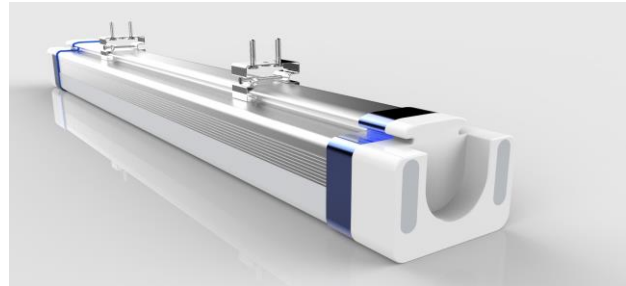


## L07G TRI-PROOF LED LIGHTS

### FEATURES

- > Warranty 5 years
- > Waterproof IP66 Waterproof, dust, corrosion and pressure-proof
- > Power Saving > 50%
- > Life Cycle 50,000 hrs.
- > Instant On No warm up time
- > Non-Flicker No flicker effect that causes fatigue
- > High Uniformity Uniform light distribution
- > No UV No-UV or IR light emitted, does not attract insects
- > Low Heat Low heat than fluorescent leading to savings in A/C costs
- > No mercury Contains no toxic mercury
- > Maintenance Free
  
- > Application Supermarket, Car Park, Petrol Station, Tunnel, Train station, Bus station, Airport, Warehouse



Photometric Files Available at [www.lightsense.com.au](http://www.lightsense.com.au)

### SPECIFICATIONS

- > Input Voltage AC 100-277V 50/60Hz
- > Beam Angle 120deg
- > Operating Temp neg 20 to 40 deg C
- > Storage Temp neg 40 to 85 deg C
  
- > IP Rating IP66
- > Fixing Methods Ceiling mount  
Suspended (Optional)
  
- > Colour Temp WW(3000K)  
NW(4000K)  
DW(5000K)  
CW(6000K)
- > Power Factor >0.93
- > Power Efficiency >0.9
- > CRI >80

### VERSIONS

| Clear Cover    |           |        |      |
|----------------|-----------|--------|------|
| Model          | Power (W) | Lumens | Lm/W |
| > L07G/600mm   | 20W       | 2100   | 115  |
| > L07G/900mm   | 30W       | 3150   | 115  |
| > L07G/1200mm  | 40W       | 4200   | 115  |
| > L07G/1500mm  | 50W       | 5250   | 115  |
| > L07G/1500mmA | 65W       | 6825   | 115  |

| Frosted Cover  |           |        |      |
|----------------|-----------|--------|------|
| Model          | Power (W) | Lumens | Lm/W |
| > L07G/600mm   | 20W       | 1900   | 105  |
| > L07G/900mm   | 30W       | 2850   | 105  |
| > L07G/1200mm  | 40W       | 3800   | 105  |
| > L07G/1500mm  | 50W       | 4750   | 105  |
| > L07G/1500mmA | 65W       | 6175   | 105  |

**High Lumen 125Lm/W and 135Lm/W available**

**Linkable and Motion Sensor options available**