

---

# LIGHTSENSE AUSTRALIA PTY LTD

## PRODUCT CATALOGUE

January 2017

---



*Street Lights*



*Solar Lights*



*Car Park Lights*



*Walkway Lights*



*Cycleway Lights*



*High Bay Lights*



*Canopy Lights*



*Flood Lights*



*Panel Lights*



*Sports Lights*



*Bollard Lights*



TEL 1300 944 822 EML [Info@lightsense.com.au](mailto:Info@lightsense.com.au)

WEB [www.lightsense.com.au](http://www.lightsense.com.au) ABN 89 127 974 501

ADD Unit 1, 197 Canning Hwy, South Perth WA 6151

---

## RL2R1 APOLLO LED STREET / CARPARK LUMINAIRE

70W - 400W HID Replacement

### FEATURES

|                      |  |
|----------------------|--|
| > Warranty           | 5 years  |
| > Power Saving       | 60% +  |
| > Life Cycle         | 50,000hrs  |
| > Low Maintenance    | Robust Construction. High-Shock and High-Vibration tolerance   |
| > Heat Dissipation   | Patented heat dissipation design achieves optimal efficiency   |
| > Modular Design     | LED Banks replaceable to allow for different lenses/application  |
| > Adjustable Knuckle | Adjustable knuckle to allow for up-cast from 0 to 90 degrees<br>Lab tested to meet individual elements of AS1158-6 and Road-tested in the harshest Australian conditions |
| > Tested             |  |
| > Instant On         | No warm up time  |
| > High CRI           | Better representation of the colour spectrum   |
| > Low Heat           | Less heat produced than HID lights reduces risk of overheating/fire  |
| > Clean light        | Contains no mercury  |
| > Application        | Main Road, Freeway, Local Street, Rural Road, Private Road, Car Park   |



Photometric Files Available at [www.lightsense.com.au](http://www.lightsense.com.au)

### SPECIFICATIONS

|                      |                                  |
|----------------------|----------------------------------|
| > Voltage Range      | AC 120-277V                      |
| > Frequency          | 50/60Hz                          |
| > Working Current    | 700MA                            |
| > Power Factor       | > 0.95                           |
| > Power Efficiency   | > 0.92                           |
| > Operating Temp     | neg 40 to 50 degC                |
| > Operating Humidity | 10% to 95%                       |
| > Light Source       | Cree LEDs                        |
| > Driver             | Phillips / Dimmable              |
| > Lens/Beam Pattern  | Selectable. AS1158 compliant     |
| > CRI                | >70                              |
| > Housing            | Die-Cast Aluminium               |
| > Lumen/Watt         | 90                               |
| > Spigot Mounting    | Max 60mm OD - adaptors available |
| > UWLR               | 0%                               |
| > IP Rating          | IP66                             |
| > IK Rating          | IK09                             |
| > Colour Temp        | 2800K - 6100K                    |
| > PE Cell            | Optional - 3pin or 7pin NEMA     |

### VERSIONS

|   | Code     | Power | LEDs   | Lumens | Net Weight |
|---|----------|-------|--------|--------|------------|
| > | RL2R1014 | 30W   | 14pcs  | 2,850  | 7.9kg      |
| > | RL2R1028 | 60W   | 28pcs  | 5,700  | 8.8kg      |
| > | RL2R1042 | 90W   | 42pcs  | 9,000  | 9.4kg      |
| > | RL2R1056 | 120W  | 56pcs  | 12,000 | 10.0kg     |
| > | RL2R1070 | 150W  | 70pcs  | 15,000 | 10.7kg     |
| > | RL2R1084 | 180W  | 84pcs  | 18,000 | 12.8kg     |
| > | RL2R1098 | 210W  | 98pcs  | 21,000 | 13.2kg     |
| > | RL2R1112 | 240W  | 112pcs | 24,000 | 13.9kg     |
| > | RL2R1126 | 270W  | 126pcs | 27,000 | 14.5kg     |
| > | RL2R1140 | 300W  | 140pcs | 30,000 | 15.1kg     |

## RL2R1 APOLLO LED SOLAR STREET / CARPARK LUMINAIRE

### FEATURES

|                      |  |
|----------------------|--|
| > Warranty           | 5 years  |
| > Life Cycle         | 50,000hrs - Luminaire  |
| > Low Maintenance    | Robust Construction. High-Shock and High-Vibration tolerance   |
| > Heat Dissipation   | Patented heat dissipation design achieves optimal efficiency   |
| > Modular Design     | LED Banks replaceable to allow for different lenses/application  |
| > Adjustable Knuckle | Adjustable knuckle to allow for up-cast from 0 to 90 degrees<br>Lab tested to meet individual elements of AS1158-6 and Road-tested in the harshest Australian conditions |
| > Tested             | No warm up time<br>Better representation of the colour spectrum  |
| > Instant On         | Less heat produced than HID lights reduces risk of overheating/fire  |
| > High CRI           | Contains no mercury  |
| > Low Heat           | Contains no mercury  |
| > Clean light        | Contains no mercury  |
| > Application        | Road, Car Park   |



Photometric Files Available at [www.lightsense.com.au](http://www.lightsense.com.au)

### SPECIFICATIONS

|                      |                              |
|----------------------|------------------------------|
| > Voltage Range      | DC 12-24V                    |
| > Working Current    | 700MA                        |
| > Power Efficiency   | > 0.9                        |
| > Operating Temp     | neg 40 to 50 degC            |
| > Operating Humidity | 10% to 95%                   |
| > Light Source       | Cree LEDs                    |
| > Driver             | Phillips                     |
| > Lens/Beam Pattern  | Selectable. AS1158 compliant |
| > CRI                | >70                          |
| > Housing            | Die-Cast Aluminium           |
| > Lumen/Watt         | >100                         |
| > Spigot Mounting    | Max 60mm OD                  |
| > UWLR               | 0%                           |
| > IP Rating          | IP65                         |
| > IK Rating          | IK09                         |
| > Colour Temp        | Warm, Day, Pure, Cool-White  |

### VERSIONS

|   | Code     | Power | LEDs  | Lumens | Net Weight |
|---|----------|-------|-------|--------|------------|
| > | RL2R1014 | 30W   | 14pcs | 2,700  | 7.9kg      |
| > | RL2R1028 | 60W   | 28pcs | 5,400  | 8.8kg      |
| > | RL2R1042 | 90W   | 42pcs | 9,000  | 9.4kg      |

## RL2N JUPITER CARPARK / FOOTPATH / CYCLEWAY LUMINAIRE

### FEATURES

- |                    |   |
|--------------------|---|
| > Warranty         | 5 years   |
| > Power Saving     | 60% +   |
| > Life Cycle       | 50,000hrs   |
| > Low Maintenance  | Robust Construction. High-Shock and High-Vibration tolerance        |
| > Heat Dissipation | Patented heat dissipation design achieves optimal efficiency        |
| > Modular Design   | LED Banks replaceable to allow for different lenses/application     |
| > Instant On       | No warm up time   |
| > High CRI         | Better representation of the colour spectrum                        |
| > Low Heat         | Less heat produced than HID lights reduces risk of overheating/fire |
| > Clean light      | Contains no mercury   |
| > Application      | Car Park, Footpath, Cycleway, Private Road                          |



Photometric Files Available at [www.lightsense.com.au](http://www.lightsense.com.au)

### SPECIFICATIONS

- |                      |                                  |
|----------------------|----------------------------------|
| > Voltage Range      | AC 120-277V                      |
| > Frequency          | 50/60Hz                          |
| > Working Current    | 700MA                            |
| > Power Factor       | > 0.92                           |
| > Power Efficiency   | > 0.85                           |
| > Operating Temp     | neg 40 to 50 degC                |
| > Operating Humidity | 10% to 95%                       |
| > Light Source       | Cree LEDs                        |
| > Driver             | Phillips                         |
| > CRI                | >70                              |
| > Housing            | Die-Cast Aluminium               |
| > Lumen/Watt         | >90                              |
| > Spigot Mounting    | Max 50mm OD - adaptors available |
| > IP Rating          | IP65                             |
| > IK Rating          | IK08                             |
| > Colour Temp        | 3000-5000K                       |

### VERSIONS

|   | Code     | Power | LEDs  | Lumens | Net Weight |
|---|----------|-------|-------|--------|------------|
| > | RL2N2001 | 22W   | 10pcs | 1,800  | 3kg        |
| > | RL2N2002 | 45W   | 20pcs | 3,600  | 3.1kg      |
| > | RL2N2003 | 67W   | 30pcs | 5,400  | 3.4kg      |

## BBE U SERIES LED STREET / CARPARK LUMINAIRE

70W - 400W HID Replacement

### FEATURES

- > Warranty 5 years
- > Power Saving 60% +
- > Life Cycle 50,000hrs
- > Low Maintenance Robust Construction. High-Shock and High-Vibration tolerance
- > Modular Design LED Banks replaceable to allow for different lenses/application
- > Instant On No warm up time
- > High CRI Better representation of the colour spectrum
- > Low Heat Less heat produced than HID lights reduces risk of overheating/fire
- > Clean light Contains no mercury
- > Application Main Road, Local Street, Rural Road, Private Road



Photometric Files Available at [www.lightsense.com.au](http://www.lightsense.com.au)

### SPECIFICATIONS

- > Voltage Range AC 85 - 264V
- > Frequency 50/60Hz
- > Working Current 700MA
- > Power Factor > 0.9
- > Power Efficiency 85%
- > Operating Temp neg 30 to 50 degC
- > Operating Humidity 10% to 90%
- > Light Source Bridgelux
- > Driver Meanwell / Inventronics
- > CRI >65
- > Housing Die-Cast Aluminium
- > Lumen/Watt 120
- > Spigot Mounting Max 60mm OD
- > IP Rating IP65
- > IK Rating IK08
- > Colour Temp 4000-6000K
- > PE Cell Optional

### VERSIONS

|   | Code | Power | LEDs | Lumens | Net Weight |
|---|------|-------|------|--------|------------|
| > | U2   | 25W   | 28   | 2,600  | 5.6kg      |
| > | U2A  | 60W   | 56   | 6,000  | 7kg        |
| > | U4   | 120W  | 112  | 11,300 | 8.8kg      |
| > | U6   | 180W  | 168  | 17,850 | 11.4kg     |

## BBE LU SERIES LED STREET / CARPARK LUMINAIRE

70W - 400W HID Replacement

### FEATURES

|                      |   |
|----------------------|---|
| > Warranty           | 5 years   |
| > Power Saving       | 60% +   |
| > Life Cycle         | 50,000hrs   |
| > Low Maintenance    | Robust Construction. High-Shock and High-Vibration tolerance        |
| > Modular Design     | LED Banks replaceable to allow for different lenses/application     |
| > Adjustable Knuckle | Adjustable knuckle to allow for up-cast from 0 to 15°               |
| > Instant On         | No warm up time   |
| > High CRI           | Better representation of the colour spectrum                        |
| > Low Heat           | Less heat produced than HID lights reduces risk of overheating/fire |
| > Clean light        | Contains no mercury   |
| > Application        | Main Road, Local Street, Rural Road, Private Road                   |



Photometric Files Available at [www.lightsense.com.au](http://www.lightsense.com.au)

### SPECIFICATIONS

|                      |                    |
|----------------------|--------------------|
| > Voltage Range      | AC 100 - 264V      |
| > Frequency          | 50/60Hz            |
| > Working Current    | 350MA              |
| > Power Factor       | > 0.9              |
| > Power Efficiency   | 85%                |
| > Operating Temp     | neg 30 to 50 degC  |
| > Operating Humidity | 10% to 90%         |
| > Light Source       | Bridgelux          |
| > Driver             | Meanwell           |
| > CRI                | >65                |
| > Housing            | Die-Cast Aluminium |
| > Lumen/Watt         | 120                |
| > Spigot Mounting    | Max 60mm OD        |
| > IP Rating          | IP65               |
| > IK Rating          | IK08               |
| > Colour Temp        | 4000-6000K         |
| > PE Cell            | Optional           |

### VERSIONS

|   | Code | Power | LEDs | Lumens | Net Weight |
|---|------|-------|------|--------|------------|
| > | LU2  | 70W   | 56   | 6,000  | 11.4kg     |
| > | LU4  | 140W  | 112  | 12,500 | 14.4kg     |
| > | LU6  | 210W  | 168  | 19,000 | 17.2kg     |
| > | LU8  | 280W  | 224  | 25,000 | 20.3kg     |

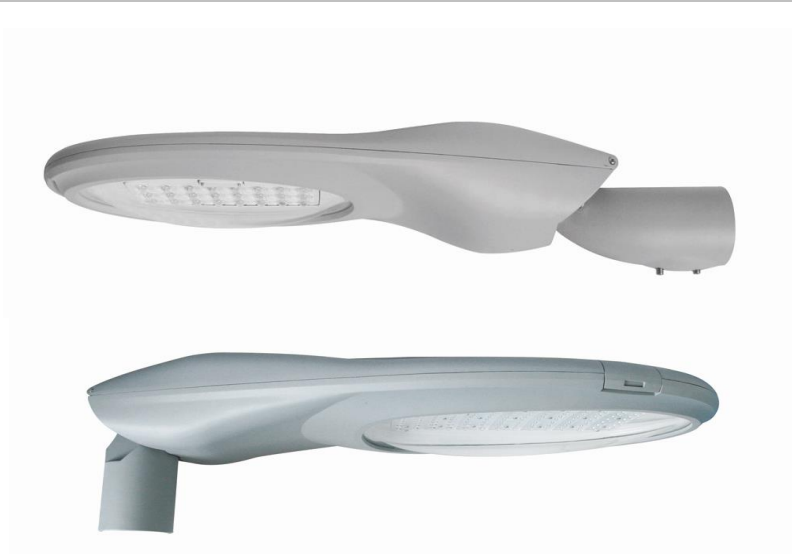


## NBDD-LED-600 LED STREET LUMINAIRE

70W - 400W HID Replacement

### FEATURES

- > Warranty 5 years
- > Power Saving 60% +
- > Life Cycle 50,000hrs
- > Low Maintenance Robust Construction. High-Shock and High-Vibration tolerance
- > Modular Design LED Banks replaceable to allow for different lenses/application
- > Adjustable Knuckle Adjustable knuckle to allow for up-cast from 0 to 90 degrees
- > Instant On No warm up time
- > High CRI Better representation of the colour spectrum
- > Low Heat Less heat produced than HID lights reduces risk of overheating/fire
- > Clean light Contains no mercury
- > Application Main Road, Freeway, Local Street, Rural Road, Private Road



Photometric Files Available at [www.lightsense.com.au](http://www.lightsense.com.au)

### SPECIFICATIONS

- > Voltage Range AC 120-277V
- > Frequency 50/60Hz
- > Working Current 350/530/700MA
- > Power Factor > 0.95
- > Power Efficiency > 0.90
- > Operating Temp neg 40 to 50 degC
- > Operating Humidity 10% to 95%
- > Light Source Cree LEDs
- > Driver Phillips / Inventronics
- > Surge Protection In Built
- > CRI >70
- > Housing Die-Cast Aluminium
- > Closure Screen Flat Tempered Glass Cover
- > Lumen/Watt 100
- > Spigot Mounting Max 60mm OD
- > UWLR 0%
- > IP Rating IP66
- > PE Cell Optional
- > Colour Temp 3000-6500K

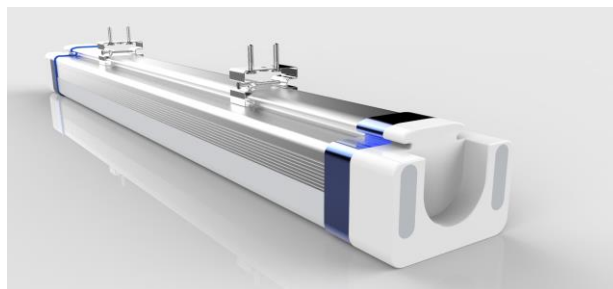
### VERSIONS

| Code               | Power | LEDs   | Lumens | Net Weight |
|--------------------|-------|--------|--------|------------|
| > NBDD-LED-600mini | 20W   | 18pcs  | 2,000  | 4.8kg      |
| > NBDD-LED-600mini | 30W   | 18pcs  | 3,150  | 4.8kg      |
| > NBDD-LED-600mini | 40W   | 18pcs  | 4,000  | 4.8kg      |
| > NBDD-LED-600mini | 25W   | 24pcs  | 2,750  | 4.8kg      |
| > NBDD-LED-600mini | 40W   | 24pcs  | 4,200  | 4.8kg      |
| > NBDD-LED-600mini | 50W   | 24pcs  | 5,000  | 4.8kg      |
| > NBDD-LED-600B    | 50W   | 48pcs  | 5,500  | 8.5kg      |
| > NBDD-LED-600B    | 80W   | 48pcs  | 8,400  | 8.5kg      |
| > NBDD-LED-600B    | 100W  | 48pcs  | 10,000 | 8.5kg      |
| > NBDD-LED-600A    | 150W  | 96pcs  | 16,500 | 13.5kg     |
| > NBDD-LED-600A    | 200W  | 96pcs  | 22,000 | 13.5kg     |
| > NBDD-LED-600A    | 180W  | 112pcs | 20,000 | 13.5kg     |
| > NBDD-LED-600A    | 250W  | 112pcs | 27,500 | 13.5kg     |

## L07G TRI-PROOF LED LIGHTS

### FEATURES

- > Warranty 5 years
- > Waterproof IP66 Waterproof, dust, corrosion and pressure-proof
- > Power Saving > 50%
- > Life Cycle 50,000 hrs.
- > Instant On No warm up time
- > Non-Flicker No flicker effect that causes fatigue
- > High Uniformity Uniform light distribution
- > No UV No-UV or IR light emitted, does not attract insects
- > Low Heat Low heat than fluorescent leading to savings in A/C costs
- > No mercury Contains no toxic mercury
- > Maintenance Free
- > Application Supermarket, Car Park, Petrol Station, Tunnel, Train station, Bus station, Airport, Warehouse



Photometric Files Available at [www.lightsense.com.au](http://www.lightsense.com.au)

### SPECIFICATIONS

- > Input Voltage AC 100-277V 50/60Hz
- > Beam Angle 120deg
- > Operating Temp neg 20 to 40 deg C
- > Storage Temp neg 40 to 85 deg C
- > IP Rating IP66
- > Fixing Methods Ceiling mount  
Suspended (Optional)
- > Colour Temp WW(3000K)  
NW(4000K)  
DW(5000K)  
CW(6000K)
- > Power Factor >0.93
- > Power Efficiency >0.9
- > CRI >80

### VERSIONS

#### Clear Cover

| Model          | Power (W) | Lumens | Lm/W |
|----------------|-----------|--------|------|
| > L07G/600mm   | 20W       | 2100   | 115  |
| > L07G/900mm   | 30W       | 3150   | 115  |
| > L07G/1200mm  | 40W       | 4200   | 115  |
| > L07G/1500mm  | 50W       | 5250   | 115  |
| > L07G/1500mmA | 65W       | 6825   | 115  |

#### Frosted Cover

| Model          | Power (W) | Lumens | Lm/W |
|----------------|-----------|--------|------|
| > L07G/600mm   | 20W       | 1900   | 105  |
| > L07G/900mm   | 30W       | 2850   | 105  |
| > L07G/1200mm  | 40W       | 3800   | 105  |
| > L07G/1500mm  | 50W       | 4750   | 105  |
| > L07G/1500mmA | 65W       | 6175   | 105  |

High Lumen 125Lm/W and 135Lm/W available

Linkable and Motion Sensor options available



## BY2G ARTEMIS LED HIGH-BAY LUMINAIRE

150W - 400W HID Replacement

### FEATURES

- > Warranty 5 years
- > Power Saving 60% +
- > Life Cycle 50,000hrs
- > Low Maintenance Robust Construction. High-Shock and High-Vibration tolerance
- > Heat Dissipation Patented heat dissipation design achieves optimal efficiency
- > Modular Design LED Banks replaceable to allow for different lenses/application
- > Mounting Pendant mount, surface mount or recessed mount options
- > Instant On No warm up time
- > High CRI Better representation of the colour spectrum
- > Low Heat Less heat produced than HID lights reduces risk of overheating/fire
- > Clean light Contains no mercury
- > Application Warehouse, Tunnel, Petrol Station

Surface Mount BY2G28xx4



Recessed Mount BY2G28xx5



Pendant Mount BY2G28xx3

### SPECIFICATIONS

- > Voltage Range AC 100-277V
- > Frequency 50/60Hz
- > Working Current 700MA
- > Power Factor > 0.95
- > Power Efficiency > 0.92
- > Operating Temp neg 40 to 50 degC
- > Operating Humidity 10% to 95%
- > Light Source Cree LEDs
- > Driver Phillips
- > Lens/Beam Pattern Selectable
- > CRI Ra >70 (options: Ra75, Ra80)
- > Housing Die-Cast Aluminium
- > Lumen/Watt 90
- > IP Rating IP65
- > Fixture Colour Options Black, Grey, White, Brown
- > Colour Temp Options Warm White (2700-3300K)  
Daylight White (3700-4300K)  
Pure White (4700-5300K)  
Cool White (5700-6300K)

### VERSIONS

|   | Code     | Power | LEDs   | Lumens | Net Weight |
|---|----------|-------|--------|--------|------------|
| > | BY2G2801 | 33W   | 14pcs  | 2,700  | 5kg        |
| > | BY2G2802 | 62W   | 28pcs  | 5,400  | 5.6kg      |
| > | BY2G2803 | 93W   | 42pcs  | 8,100  | 6.25kg     |
| > | BY2G2804 | 123W  | 56pcs  | 10,800 | 7kg        |
| > | BY2G2805 | 155W  | 70pcs  | 13,500 | 7.7kg      |
| > | BY2G2806 | 185W  | 84pcs  | 16,200 | 9.3kg      |
| > | BY2G2807 | 216W  | 98pcs  | 18,900 | 10.4kg     |
| > | BY2G2808 | 246W  | 112pcs | 22,800 | 11.6kg     |
| > | BY2G2809 | 277W  | 126pcs | 25,650 | 12.1kg     |
| > | BY2G2810 | 308W  | 140pcs | 28,500 | 16.2kg     |

Photometric Files Available at [www.lightsense.com.au](http://www.lightsense.com.au)

## H03CO - UFO HIGH BAY

### FEATURES

- > Warranty 5 years
- > Power Saving 60% +
- > Life Cycle 50,000hrs
- > Low Maintenance Robust Construction. High-Shock and High-Vibration tolerance
- > Heat Dissipation Heat dissipation design achieves optimal efficiency
- > Beam Angle Selectable
- > Mounting Suspended mount or ceiling mount options
- > Instant On No warm up time
- > High CRI Better representation of the colour spectrum
- > Clean light No mercury, No UV, No lead



Photometric Files Available at [www.lightsense.com.au](http://www.lightsense.com.au)

### SPECIFICATIONS

- > Voltage Range AC 100 - 277V
- > Frequency 50/60Hz
- > Power Factor  $\geq 0.93$
- > Power Efficiency  $\geq 0.9$
- > Operating Temp neg 20 to 50 degC
- > Operating Humidity 10% to 80%
- > Driver Meanwell
- > Lens/Beam Pattern 60°, 90° or 110°
- > CRI >80
- > Housing Die-Cast Aluminium
- > Lumen/Watt 125 or 135
- > IP Rating IP65
- > Fixture Colour Black. Trim selectable  
Warm White 3000K  
Daylight White 4000K  
Pure White 5000K  
Cool White 6000K
- > Colour Temp Options

### VERSIONS

#### Standard Lumen 120-130Lm/W

| Model   | Dimension (mm) | Power (W) | Lumens |
|---------|----------------|-----------|--------|
| > H03CO | 320            | 100W      | 12,500 |
|         | 320            | 150W      | 18,750 |
|         | 380            | 200W      | 25,000 |
|         | 380            | 240W      | 30,000 |

#### High Lumen 140-150Lm/W

| Model     | Dimension (mm) | Power (W) | Lumens |
|-----------|----------------|-----------|--------|
| > H03CO-H | 320            | 100W      | 14,500 |
|           | 320            | 150W      | 21,750 |
|           | 380            | 200W      | 29,000 |
|           | 380            | 240W      | 34,800 |

## FL2F ARTEMIS LED FLOOD LIGHT LUMINAIRE

150W - 400W HID Replacement

### FEATURES

- > Warranty 5 years
- > Power Saving 60% +
- > Life Cycle 50,000hrs
- > Low Maintenance Robust Construction. High-Shock and High-Vibration tolerance
- > Heat Dissipation Patented heat dissipation design achieves optimal efficiency
- > Modular Design LED Banks replaceable to allow for different lenses/application
- > Mounting Adjustable bracket or rigid wall mounting options
- > Instant On No warm up time
- > High CRI Better representation of the colour spectrum
- > Low Heat Less heat produced than HID lights reduces risk of overheating/fire
- > Clean light Contains no mercury
- > Application Flood lighting

Bracket Mount FL2F28xx0



Wall Mount FL2F28xx2

### SPECIFICATIONS

- > Voltage Range AC 120-277V
- > Frequency 50/60Hz
- > Working Current 700MA
- > Power Factor > 0.95
- > Power Efficiency > 0.92
- > Operating Temp neg 40 to 50 degC
- > Operating Humidity 10% to 95%
- > Light Source Cree LEDs
- > Driver Phillips
- > Lens/Beam Pattern Selectable
- > CRI >75
- > Housing Die-Cast Aluminium
- > Lumen/Watt 90
- > IP Rating IP65
- > Fixture Colour Options Black, Grey, White, Brown
- > Colour Temp Options Warm White (2700-3300K)  
Daylight White (3700-4300K)  
Pure White (4700-5300K)  
Cool White (5700-6300K)

### VERSIONS

|   | Code     | Power | LEDs   | Lumens | Net Weight |
|---|----------|-------|--------|--------|------------|
| > | FL2F2801 | 33W   | 14pcs  | 2,700  | 5.8kg      |
| > | FL2F2802 | 62W   | 28pcs  | 5,400  | 6.3kg      |
| > | FL2F2803 | 93W   | 42pcs  | 8,100  | 7.2kg      |
| > | FL2F2804 | 123W  | 56pcs  | 10,800 | 7.8kg      |
| > | FL2F2805 | 155W  | 70pcs  | 13,500 | 8.4kg      |
| > | FL2F2806 | 185W  | 84pcs  | 16,200 | 10.2kg     |
| > | FL2F2807 | 216W  | 98pcs  | 18,900 | 12.6kg     |
| > | FL2F2808 | 246W  | 112pcs | 22,800 | 13.9kg     |
| > | FL2F2809 | 277W  | 126pcs | 25,650 | 14.5kg     |
| > | FL2F2810 | 308W  | 140pcs | 28,500 | 15.6kg     |

Photometric Files Available at [www.lightsense.com.au](http://www.lightsense.com.au)

## TL2R ARTEMIS LED TUNNEL LIGHT LUMINAIRE

150W - 400W HID Replacement

### FEATURES

- > Warranty 5 years
- > Power Saving 60% +
- > Life Cycle 50,000hrs
- > Low Maintenance Robust Construction. High-Shock and High-Vibration tolerance
- > Heat Dissipation Patented heat dissipation design achieves optimal efficiency
- > Modular Design LED Banks replaceable to allow for different lenses/application
- > Mounting Adjustable Wall Mount
- > Instant On No warm up time
- > High CRI Better representation of the colour spectrum
- > Low Heat Less heat produced than HID lights reduces risk of overheating/fire
- > Clean light Contains no mercury
- > Application Tunnel



Photometric Files Available at [www.lightsense.com.au](http://www.lightsense.com.au)

### SPECIFICATIONS

- > Voltage Range AC 100-277V
- > Frequency 50/60Hz
- > Working Current 700MA
- > Power Factor > 0.95
- > Power Efficiency > 0.92
- > Operating Temp neg 40 to 50 degC
- > Operating Humidity 10% to 95%
- > Light Source Cree LEDs
- > Driver Phillips
- > Lens/Beam Pattern Selectable
- > CRI >75
- > Housing Die-Cast Aluminium
- > Lumen/Watt 90
- > IP Rating IP65
- > Fixture Colour Options Black, Grey, White, Brown
- > Colour Temp Options Warm, Daylight, Pure, Cool-White

### VERSIONS

|   | Code     | Power | LEDs   | Lumens | Net Weight |
|---|----------|-------|--------|--------|------------|
| > | TL2R2802 | 62W   | 28pcs  | 5,400  | 6.8kg      |
| > | TL2R2803 | 93W   | 42pcs  | 8,100  | 7.6kg      |
| > | TL2R2804 | 123W  | 56pcs  | 10,800 | 9.6kg      |
| > | TL2R2805 | 155W  | 70pcs  | 13,500 | 10.5kg     |
| > | TL2R2806 | 185W  | 84pcs  | 16,200 | 11.2kg     |
| > | TL2R2807 | 216W  | 98pcs  | 18,900 | 12.3kg     |
| > | TL2R2808 | 246W  | 112pcs | 22,800 | 13.1kg     |
| > | TL2R2809 | 277W  | 126pcs | 25,650 | 13.4kg     |
| > | TL2R2810 | 308W  | 140pcs | 28,500 | 14.8kg     |

## DIGITRON HIGH POWER FLOOD LIGHTS

### FEATURES

|                   |  |
|-------------------|--|
| > Warranty        | 5 years Fixture / 4 years SMPS   |
| > Waterproof      | IP66   |
| > Power Saving    | >50%   |
| > Life Cycle      | 40,000 hrs.  |
| > Instant On      | No warm up time  |
| > Non-Flicker     | No flicker effect that causes fatigue  |
| > High Uniformity | Uniform light distribution   |
| > No UV           | No-UV or IR light emitted, does not attract insects  |
| > No mercury      | Contains no toxic mercury  |
| > Glass Cover     | Tempered glass cover   |
| > Application     | Sports Grounds, Ovals, Car Parks, Port facilities, Golf courses, Race tracks, Mining, Flood lighting |

DGT-IL800W



Photometric Files Available at [www.lightsense.com.au](http://www.lightsense.com.au)

### SPECIFICATIONS

|                      |                    |
|----------------------|--------------------|
| > Input Voltage      | AC 90-305V 50/60Hz |
| > Beam Angle         | 15, 40, 65deg      |
| > Operating Temp     | neg 40 to 50 deg C |
| > Storage Temp       | neg 40 to 80 deg C |
| > Operating Humidity | 20% - 95%          |
| > IP Rating          | IP66               |
| > Colour Temp        | 3000K - 5000K      |
| > CRI                | >75                |
| > Power Factor       | >0.95              |
| > Power Efficiency   | >0.87              |

### VERSIONS

|                       | Model DGT-IL200W | Beam Angle                               |          |          |
|-----------------------|------------------|--|----------|----------|
|                       |                  | 15deg                                    | 40deg    | 65deg    |
| > Total Flux          |                  | 20,496lm                                 | 19,385lm | 19,017lm |
| > Luminous Efficiency |                  | 103lm/W                                  | 98lm/W   | 96lm/W   |
| > Size                |                  | 389 x 211 x 128mm (ex fixing bracket)    |          |          |
| > Weight              |                  | 9.52kg                                   |          |          |
|                       | Model DGT-IL400W | Beam Angle                               |          |          |
|                       |                  | 15deg                                    | 40deg    | 65deg    |
| > Total Flux          |                  | 39,270lm                                 | 37,345lm | 36,960lm |
| > Luminous Efficiency |                  | 102lm/W                                  | 97lm/W   | 96lm/W   |
| > Size - Flood Light  |                  | 389x363x136mm (ex fixing bracket & SMPS) |          |          |
| > Size - SMPS         |                  | 309 x 258 x 129mm                        |          |          |
| > Weight              |                  | 21.66kg (inc SMPS)                       |          |          |
|                       | Model DGT-IL600W | Beam Angle                               |          |          |
|                       |                  | 15deg                                    | 40deg    | 65deg    |
| > Total Flux          |                  | 58,776lm                                 | 55,645lm | 55,427lm |
| > Luminous Efficiency |                  | 102lm/W                                  | 96lm/W   | 96lm/W   |
| > Size - Flood Light  |                  | 515x389x136mm (ex fixing bracket & SMPS) |          |          |
| > Size - SMPS         |                  | 309 x 258 x 129mm                        |          |          |
| > Weight              |                  | 28.18kg (inc SMPS)                       |          |          |
|                       | Model DGT-IL800W | Beam Angle                               |          |          |
|                       |                  | 15deg                                    | 40deg    | 65deg    |
| > Total Flux          |                  | 76,440lm                                 | 72,540lm | 71,760lm |
| > Luminous Efficiency |                  | 98lm/W                                   | 93lm/W   | 92lm/W   |
| > Size - Flood Light  |                  | 515x466x136mm (ex fixing bracket & SMPS) |          |          |
| > Size - SMPS         |                  | 309 x 258 x 129mm                        |          |          |
| > Weight              |                  | 32.68kg (inc SMPS)                       |          |          |



## RL2W VENUS LED WALL PACK LUMINAIRE

70W - 250W HID Replacement

### FEATURES

|                    |   |
|--------------------|---|
| > Warranty         | 5 years   |
| > Power Saving     | 60% +   |
| > Life Cycle       | 50,000hrs   |
| > Low Maintenance  | Robust Construction. High-Shock and High-Vibration tolerance                              |
| > Heat Dissipation | Patented heat dissipation design achieves optimal efficiency                              |
| > Modular Design   | LED banks replaceable to allow for different lenses/applications                          |
| > Motion Sensor    | Optional Infrared motion sensor control, brightness adjustable at 0%, 10%, 30%, 60%, 100% |
| > Photo Sensor     | Optional PE Cell  |
| > Instant On       | No warm up time   |
| > High CRI         | Better representation of the colour spectrum  |
| > Low Heat         | Less heat produced than HID lights reduces risk of overheating/fire                       |
| > Clean light      | Contains no mercury   |
| > Dimmable Option  | 0-10V Dim or Pre-Programmed   |
| > Application      | Laneway, Side of Building, Car park   |



Photometric Files Available at [www.lightsense.com.au](http://www.lightsense.com.au)

### SPECIFICATIONS

|                      |                           |
|----------------------|---------------------------|
| > Voltage Range      | AC 100-277V               |
| > Frequency          | 50/60Hz                   |
| > Working Current    | 700MA                     |
| > Power Factor       | 0.96                      |
| > Operating Temp     | neg 40 to 55 degC         |
| > Operating Humidity | 10% to 95%                |
| > Light Source       | Cree LEDs                 |
| > Driver             | Phillips                  |
| > Lens/Beam Pattern  | Selectable                |
| > CRI                | > 75                      |
| > Housing            | Die-Cast Aluminium        |
| > Lumen/Watt         | 85                        |
| > IP Rating          | IP65                      |
| > Colour Temp Range  | 2700-6300                 |
| > Housing Colour     | White, Grey, Brown, Black |

### VERSIONS

|   |          |            |                   |
|---|----------|------------|-------------------|
| > | RL2W2801 | Wattage    | 30W               |
|   |          | Lumens     | 2,904             |
|   |          | LEDs       | 14pcs             |
|   |          | Dimensions | 264 x 352 x 192mm |
|   |          | Weight     | 6.64kg            |
| > | RL2W2802 | Wattage    | 60W               |
|   |          | Lumens     | 5,456             |
|   |          | LEDs       | 28pcs             |
|   |          | Dimensions | 326 x 352 x 192mm |
|   |          | Weight     | 7.33kg            |
| > | RL2W2803 | Wattage    | 90W               |
|   |          | Lumens     | 8,184             |
|   |          | LEDs       | 42pcs             |
|   |          | Dimensions | 388 x 352 x 192mm |
|   |          | Weight     | 8.03kg            |



## PL1A TITAN LED COURTYARD LUMINAIRE

75W - 150W HID Replacement

### FEATURES

- > Warranty 5 years
- > Power Saving 60% +
- > Life Cycle 50,000hrs
- > Low Maintenance Robust Construction. High-Shock and High-Vibration tolerance
- > Heat Dissipation Patented heat dissipation design achieves optimal efficiency
- > Traditional Design Based on traditional courtyard light design
- > Instant On No warm up time
- > High CRI Better representation of the colour spectrum
- > Low Heat Less heat produced than HID lights reduces risk of overheating/fire
- > Clean light Contains no mercury
- > Colour Silver Grey, Matt Black, Black, White
- > Application Local Road, Rural Road, Private Road, Footpath, Cycleway, Park



Photometric Files Available at [www.lightsense.com.au](http://www.lightsense.com.au)

### SPECIFICATIONS

- > Voltage Range AC 120-277V
- > Frequency 50/60Hz
- > Working Current 350MA
- > Power Factor >0.95
- > Power Efficiency > 88%
- > Operating Temp neg 40 to 65 degC
- > Operating Humidity 10% to 95%
- > Light Source Cree LEDs
- > Driver Phillips
- > Lens/Beam Pattern Selectable
- > CRI > 75
- > Housing Die-Cast Aluminium
- > Spigot Size 82mm
- > Lumen/Watt > 90
- > IP Rating IP65
- > Dimensions 550mm (h) x 452mm (dia)
- > Colour Temp 2700-5500K

### VERSIONS

|   | Code     | Power | LEDs  | Lumens | Net Weight |
|---|----------|-------|-------|--------|------------|
| > | PL1A1012 | 15W   | 12pcs | 1,100  | 8kg        |
| > | PL1A1024 | 30W   | 24pcs | 2,200  | 8.3kg      |
| > | PL1A1036 | 45W   | 36pcs | 3,300  | 9kg        |
| > | PL1A1048 | 60W   | 48pcs | 4,400  | 9.3kg      |
| > | PL1A1060 | 75W   | 60pcs | 5,500  | 9.5kg      |

## PL1F GALAXY LED COURTYARD LUMINAIRE

75W - 150W HID Replacement

### FEATURES

- > Warranty 5 years
- > Power Saving 60% +
- > Life Cycle 50,000hrs
- > Low Maintenance Robust Construction. High-Shock and High-Vibration tolerance
- > Heat Dissipation Patented heat dissipation design achieves optimal efficiency
- > Traditional Design Based on traditional courtyard light design
- > Instant On No warm up time
- > High CRI Better representation of the colour spectrum
- > Low Heat Less heat produced than HID lights reduces risk of overheating/fire
- > Clean light Contains no mercury
- > Colour Silver Grey, Matt Black, Black, White
- > Application Local Road, Rural Road, Private Road, Footpath, Cycleway, Park



Photometric Files Available at [www.lightsense.com.au](http://www.lightsense.com.au)

### SPECIFICATIONS

- > Voltage Range AC 120-277V
- > Frequency 50/60Hz
- > Working Current 350MA
- > Power Factor > 0.95
- > Power Efficiency > 88%
- > Operating Temp neg 40 to 50 degC
- > Operating Humidity 10% to 95%
- > Light Source Cree LEDs
- > Driver Phillips
- > Lens/Beam Pattern Selectable
- > CRI > 75
- > Housing Die-Cast Aluminium
- > Lumen/Watt > 90
- > IP Rating IP65
- > Dimensions 301mm (h) x 500mm (dia)
- > Colour Temp Range 2700-5500K

### VERSIONS

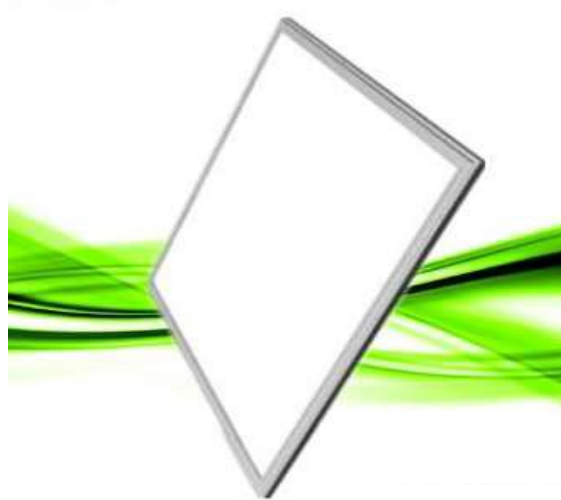
|   | Code     | Wattage | LEDs  | Lumens | Net Weight |
|---|----------|---------|-------|--------|------------|
| > | PL1F1012 | 15W     | 12pcs | 1,100  | 6.1kg      |
| > | PL1F1024 | 30W     | 24pcs | 2,200  | 7.4kg      |
| > | PL1F1036 | 45W     | 36pcs | 3,300  | 7.7kg      |
| > | PL1F1048 | 60W     | 48pcs | 4,400  | 8kg        |
| > | PL1F1060 | 75W     | 60pcs | 5,500  | 8.5kg      |

## LY-SERIES LED PANEL LIGHTS

Fluorescent Tube Replacement

### FEATURES

- > Warranty 5 years
- > Power Saving > 50%
- > Life Cycle 50,000 hrs.
- > Instant On No warm up time
- > Non-Flicker No flicker effect that causes fatigue
- > High Uniformity Uniform light distribution
- > No UV No-UV or IR light emitted, does not attract insects
- > Low Heat Lower heat than fluorescent leading to savings in A/C costs
- > No mercury Contains no toxic mercury
- > Architectural Design 11mm Slimline attractive design
- > Maintenance Free
  
- > Application Commercial Buildings, Schools, Hospitals, Retail Shops, Laboratories, Galleries



Photometric Files Available at [www.lightsense.com.au](http://www.lightsense.com.au)

### SPECIFICATIONS

- > Input Voltage AC 85-265V 50/60Hz
- > Beam Angle 120 deg
- > Operating Temp neg 10 to 40 deg C
- > Storage Temp neg 20 to 60 deg C
- > Operating Humidity 10-80%
- > IK Rating IK04
- > IP Rating IP41
- > Fixing Methods Recessed  
Surface Mount (Optional)  
Suspended (Optional)
- > Colour Temp 2700-3300K (Warm White)  
4000-5000K (Pure White)  
5500-7000K (Cool White)
- > CRI >80

### VERSIONS

| Model     | Size (mm) | Power (W) | Flux (lm) |
|-----------|-----------|-----------|-----------|
| > LY-33A  | 300*300   | 18W       | 1660      |
| > LY-33B  | 300*300   | 25W       | 2400      |
| > LY-36   | 300*600   | 25W       | 2300      |
| > LY-66A  | 600*600   | 30W       | 2800      |
| > LY-66B  | 600*600   | 54W       | 5300      |
| > LY-66C  | 600*600   | 40W       | 3800      |
| > LY-66D  | 620*620   | 40W       | 3800      |
| > LY-66E  | 620*620   | 54W       | 5300      |
| > LY-66F  | 600*600   | 60W       | 5700      |
| > LY-312A | 300*1200  | 40W       | 3750      |
| > LY-312B | 300*1200  | 60W       | 5700      |
| > LY-612A | 600*1200  | 54W       | 5320      |
| > LY-612B | 600*1200  | 72W       | 6800      |

**DALI DIMMABLE AVAILABLE**

**1-10V DIMMABLE AVAILABLE**

## BL1B LED BOLLARD LIGHT

### FEATURES

- > Warranty 3 years
- > Power Saving 60% +
- > Life Cycle 50,000hrs
- > Low Maintenance Robust Construction. High-Shock and High-Vibration tolerance
- > Heat Dissipation Heat dissipation design achieves optimal efficiency
- > Unique Design Distinctive mushroom designed bollard construction
- > Instant On No warm up time
- > High CRI Better representation of the colour spectrum
- > Low Heat Less heat produced than HID lights reduces risk of overheating and cool touch design
- > Colour Matt Black - Cold Grey - White
- > Application Public open spaces, Private Residences, Private Road, Footpath, Cycleway, Park



Photometric Files Available at [www.lightsense.com.au](http://www.lightsense.com.au)

### SPECIFICATIONS

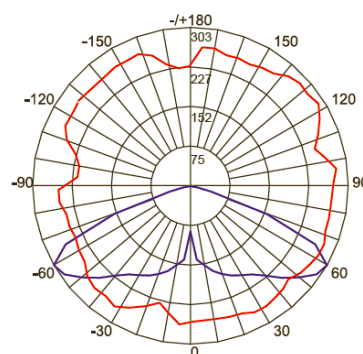
- > Voltage Range AC 100-240V
- > Operating Temp neg 40 to 50 deg C
- > Housing Die-cast Aluminium
- > Lumen/Watt >90
- > IP Rating IP65
- > Dimensions 419mm (h) x 300mm (dia)
- > Colour Temp Range 2700-5500K
- > Lens/Beam Pattern A4S101



### VERSIONS

|   | Code     | Power | LEDs | Lumens |
|---|----------|-------|------|--------|
| > | BL1B1010 | 12W   | 10   | 1,050  |

Light Distribution Curve



Luminous Intensity Unit : cd/klm

Lens Code : A4S101

## BL1D LED BOLLARD LIGHT

### FEATURES

- > Warranty 3 years
- > Power Saving 60% +
- > Life Cycle 50,000hrs
- > Low Maintenance Robust Construction. High-Shock and High-Vibration tolerance
- > Heat Dissipation Heat dissipation design achieves optimal efficiency
- > Instant On No warm up time
- > High CRI Better representation of the colour spectrum
- > Low Heat Less heat produced than HID lights reduces risk of overheating and cool touch design
- > Colour Matt Black - Cold Grey
- > Application Public open spaces, Private Residences, Private Road, Footpath, Cycleway, Park



### SPECIFICATIONS

- > Voltage Range AC 100-240V
- > Operating Temp neg 40 to 50 deg C
- > Housing Die-cast Aluminium
- > Lumen/Watt >90
- > IP Rating IP65
- > Dimensions 113 x 107 x 603mm - LxWxH
- > Colour Temp Range 2700-5500K

### VERSIONS

- |   | Code     | Power | LEDs |
|---|----------|-------|------|
| > | BL1D1006 | 6W    | 6    |
| > | BL1DA006 | 12W   | 6    |





---

TEL 1300 944 822 EML [info@lightsense.com.au](mailto:info@lightsense.com.au)  
WEB [www.lightsense.com.au](http://www.lightsense.com.au) ABN 89 127 974 501  
ADD Unit 1, 197 Canning Hwy, South Perth WA 6151

---